

# MATARANGI BEACH PAPER

INCLUDING SIMPSONS, KUAOTUNU, OTARA, OPITO, RINGS, GREYS AND WHANGAPOUA BEACHES

MBP 156  
FEBRUARY  
2023

## Cyclone Hale Devastates Bird Life on the Coromandel Peninsula



The recent weather event known as Cyclone Hale had well-known and much talked about impacts on our beaches, roads and the landscape in general. A lesser-known impact, however, is the impact on our wild birds, especially sea birds.

Sea birds suffered hugely during this event, with large numbers of dead birds being found on the beaches around the eastern side of the Coromandel Peninsula. Many dotterel nests/habitats were also lost, the burrows of many little blue penguins were washed out, and many grey-faced petrels and some shearwater species got caught in the strong winds and dropped at sea or in odd places.

The Kuaotunu Bird Rescue Trust took in over 100 birds that had been affected by the storm in the first three weeks of the new year. The majority were crashed sea birds, but there were also many lost fledglings including kingfishers, silver eyes, pigeons, kereru, swallows and other non natives.

Annemieke Kregting, founder of Kuaotunu Bird Rescue, said that the species most badly affected was the grey-faced petrels, who timed it badly as their chicks were fledging at the time the cyclone hit the Coromandel. "We recorded 59 grey-faced petrels in the first two weeks of January, compared to 11 in the whole month of December", she said.

Most of the petrels that were just leaving their burrows were blown onto land or water around the east coast. Those petrels which ended up on the ground struggled to take off again and needed to get to higher ground as soon as possible to have another go. By the time they were found, often in odd places, some were getting dehydrated and the ones on the water were tired and hungry too.

A team of regular volunteers at Kuaotunu Bird Rescue Trust got ready to get a triage underway as the birds came in thick and fast. Every bird was weighed, assessed, warmed up, recorded, and supplied with electrolytes followed by fish broth. Native birds were also banded, with their numbers being recorded not only in the Trust's database, but also with the Department of Conservation.

According to Annemieke, special care was taken to keep the feathers of the petrels in good condition by giving them regular swims and sprays with salt water. "Petrels normally don't sit for long, so plenty of padding was needed in their box to avoid pressure sores on their feet. This resulted in enormous piles of washing!" With 7 volunteers per day, this care routine was undertaken twice a day, with more birds arriving in between.

The petrels that were increasing their weight daily and were otherwise in great condition were released from a height at a private property. This was undertaken at night once darkness had fallen, as this is when petrels are active. The ones that didn't make it were buried in deep holes on the beach to finish their lifecycle.

Annemieke said that Kuaotunu Bird Rescue was enormously grateful for the support it received from the community to help with this influx of avian patients. "We had local people who contributed tinned fish and other food supplies, some neighbours turned up each night to help with the endless washing and to help with feeding and cleaning, and staff from DOC also pitched in to help on the really busy nights. CoroVets in Whangamata did an amazing job by giving the birds first aid before sending them on to us for specialised care, and Radio CFM also helped by broadcasting calls for assistance to transport the birds from wherever they were found to our base at Kuaotunu."

If you would like to support the work of the Kuaotunu Bird Rescue Trust please visit their website, <https://www.kuaotunubirdrescue.org.nz/support-us/>. The Trust is also on Facebook.



# Your EVERYDAY LOCAL

Convenient, Great Range & Prices Quality Fresh Products

Open 7 Days  
195 Matarangi Drive, Matarangi - p 07 866 5391

**FOUR SQUARE**  
MATARANGI





**Guthrie Bowron**  
Whitianga

*Inspiration starts here.*

WE HELP  
SELECT YOUR

**COLOURS  
CURTAINS  
TILES  
CARPET**

WE COME TO  
YOUR HOME TO

**MEASURE  
& QUOTE**

WE PROVIDE  
YOU WITH

**INSPIRATION  
AND  
ADVICE**

WE OFFER YOU  
PLENTY OF

**TOP SERVICE  
& VALUE FOR  
MONEY**

*Rachael and Julian* have put together a qualified team experienced to assist you with all of your interior decor needs. We are skilled at colour scheming and we love to help with the final touches that complete a room. Come and talk with our friendly team of specialists or phone for an appointment and we will come to you.

**Guthrie Bowron Whitanga**  
2/9 Joan Gaskell Drive, Whitianga  
**07 866 0035** [sales@gbwhitianga.co.nz](mailto:sales@gbwhitianga.co.nz)

*Trust us with  
your decorating  
project*


FLOORING	WALLPAPER	PAINT
CURTAINS	BLINDS	ADVICE


# WE'VE GOT YOU COVERED!

From practical stock solutions through to dream home aspirations, we have you covered with great finance options!


Come visit us at our co-located Carpet Court & CurtainStudio store  
1 Blacksmith Lane, Whitianga | 07 834 6463

Carpet | Vinyl | Wood | Rugs  
Curtains | Blinds | Tracks | Shutters | Accessories





carpetcourt

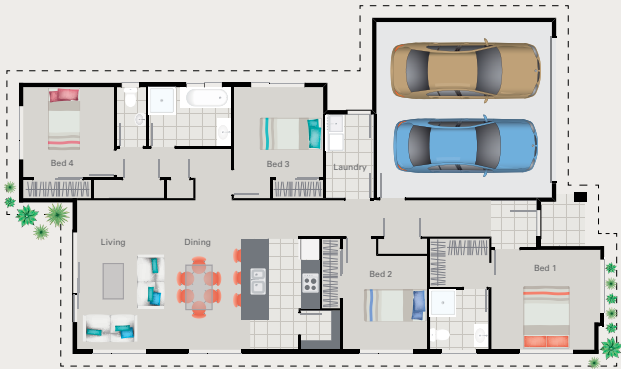


CurtainStudio



**Seabreeze**

 4
  2
  1
  163.5m<sup>2</sup>



Seabreeze Mangawhai Floor Plan © G.J. Gardner Homes 2021

# BUILD YOUR BEACH ESCAPE

G.J. Gardner has an extensive range of customisable plans to suit all kinds of families, lifestyles and budgets. From modern, stylish homes at an affordable price to sprawling country estates, every plan has been thoughtfully designed to suit New Zealand's landscapes so your home will always look at home in its surroundings.

View our full range of concept plans at [gjgardner.co.nz](http://gjgardner.co.nz). We can also design a new home for you from scratch.

For free expert advice, call into our showhome at 1 Vanita Drive, Whitianga. Open Monday to Friday 10am – 4pm and Saturday 10am – 3pm.

**0800 42 45 46 / [gjgardner.co.nz](http://gjgardner.co.nz)**

**G.J. Gardner.** HOMES



## Contents:

**Page 4 - FST with Phillip & Vanessa**

**Page 5 - Oour Coromandel**

**Page 6 - Predator Free Coromandel**

- Fire Report

- Pestie Corner

- Where in the World

**Page 7 - Cardboard Cup**

- How's the Weather Lately

**Page 11 - School Bell**

- Fishing Report

- Ten Years On

**Page 12 - Arts Space**

- Are You Festival Ready

**Page 13 - Congratulation Corner**

- Good Sorts

- Puzzle Corner & Stargazers

**Page 14 - Notices, Tides and Events**

### CONTRIBUTORS:

The Matarangi Beach Paper thanks the following contributors... Te Rerenga School; David Key; Alastair Brickell, Sharon Clay; Howie Taylor; Mark Hall; The Dunes Golf Club; Kuaotunu Bird Rescue Trust, A Taste of Matarangi and Greg Jenks because without these contributions and stories, your local paper wouldn't be quite the same. Thank you!



### CONTACTS & DEADLINES

This is your community paper. We welcome all your stories, photos, messages and contributions.

#### THE TEAM

Editor Liam Kedzlie

Deputy Editors Mary & Teresa Kedzlie

Printer Endeavour Print

#### ALL ENQUIRIES

Liam 027 868 9568

contact@matarangibeachpaper.com

#### BUSINESS ADVERTISING

Please email or phone Liam for a rate sheet.

#### DELIVERIES

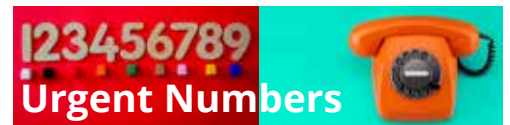
The rural letterbox deliveries are the first Friday of every month.

#### SUBSCRIBE

For a monthly e-version subscribe at: contact@matarangibeachpaper.com

#### DISCLAIMER

Opinions expressed in The Matarangi Beach Paper are not those of the publisher and editors. No responsibility accepted for loss or damage suffered by anyone relying on the information within. No endorsement of any service or product advertised or featured is implied or assumed.



COASTGUARD 866-2883 (Emergency 111)  
COROMANDEL DOCTOR 866-8500  
RESCUE HELICOPTER 866-5147 (Emergency 111)  
JUSTICE OF THE PEACE 866-2075  
MATARANGI BEACH PAPER (Liam) 027 8689568  
LANDSAR KUAOTUNU (Emergency 111)  
MAREE TAYLOR (Marriage Celebrant) 021 0429127  
MEDICAL CENTRE 866-5911  
MP for COROMANDEL OFFICE 868-3529  
MPI - FISHERIES OFFICERS 088476224  
MATARANGI FIRE STATION 866-4325 (Emergency 111)  
MATARANGI RATE PAYERS 866-0968  
ROAD CLOSURES 0800 444449  
RUBBISH TIP 866-5427  
RD2 WHITIANGA (Toby) 021 587 211  
TWENTYMANS FUNERALS 8686003  
TCDC AREA OFFICE 8680200  
REGIONAL COUNCIL OFFICE (07) 866 0172  
ST JOHNS AMBULANCE 0800426285 (Emergency 111)  
WHITIANGA POLICE STATION 866-4000 (Emergency 111)  
COROMANDEL POLICE STATION 866-1190 (Emergency 111)

## Matarangi Beach Access Under Question

Along the 4 kilometre beach there are 24 pedestrian access points of which 4 are also capable of Quad Bike/LTV access and just a single wheelchair access point for the disabled. The tragedy at Opoutere last month brought into focus the urgency of rapid beach access for emergency services. Having beach access points spread a kilometre apart for emergency vehicles is less than ideal, likewise having just a single wheelchair access point smacks of unfairness. Isn't it best to get this sorted out now before the blame game starts following an urgent emergency rescue inhibited by suboptimal beach access with the finger pointed back at Council for not thinking it through and failing to provide a balanced solution?

## THE MATARANGI BEACH ENVIRONMENT AFTER EX-CYCLONE HALE

## Report by Greg Jenks

The recent effects of ex-cyclone Hale remind us that the potentially profound early consequences of climate change are now here for all to see – this storm has been largely generated by the unprecedented third season of the La Nina weather pattern – “La Nina is officially back for an historic third time in a row” (WeatherWatch 2023).

This potentially damaging and now ‘historic’ climate pattern mainly affects NZ’s upper east coasts, like the Coromandel Peninsula, Bay of Plenty and Gisborne areas impacted this time. These impacts have occurred, due to the more intense cyclonic (clockwise) winds and waves which have adversely affected our degraded and already exposed beach ecosystems. Even some long-restored beaches that have preferentially utilised indigenous halophyte (salt tolerant) foredune plants have suffered some damage – but this is the normal Cut and Fill Cycle at work. The main difference between degraded and restored beaches is the extent of that damage AND the extent/speed of recovery.

Storm winds generated by ex-Cyclone Hale as it tracked further south - Source: WeatherWatch.co.nz

1. Degraded beaches: These are the most common beaches in NZ, frequently barren or dominated by non-salt tolerant plants like East African kikuyu, European marram, South African ice plant etc. The extreme modification of these beaches results in narrow high tide beaches that have physically limited sand storage and storm resilience due to their domination by alien and poorly functioning plants. The new item following clearly shows the effects of this poor resilience during cyclone Hale: “... in the Coromandel, the destructive high tide at Mercury Bay on Tuesday [10 Jan] threatened a beach front property, which bore the brunt of the heavy coastal swells generated by Cyclone Hale (Stuff News 12 Jan)”.

2. Restored beaches: Mt Maunganui beach was diligently and progressively restored starting in 1999 through to 2002, so now has a significantly wider dune buffer composed of naturally accreted sand built up over 23 years – all naturally stored by the high-performing salt-tolerant indigenous foredune plants, like spinifex and pingao. This increasingly immense and dynamically stable storm buffer is now about 40 metres seaward of the steep >2m high eroded dune scarp that dominated this formerly degraded beach ecosystem when restoration progressively commenced. But even this wide buffer experienced some limited frontal dune toe erosion during

this ‘historic’ storm event. But this is what beaches must do to effectively ‘buffer’ the impacts of severe storms like cyclone Hale. But due to the persistent sand trapping and stabilisation over the many years since restoration commenced, that limited erosion was so far seaward of any homes or other infrastructure that it didn’t warrant any media attention – media generally prefer ‘bad news’. And due to the rapid sand trapping seaward growth of the salt-tolerant indigenous plants, the dune buffer will again promptly repair itself during the calm weather period after this storm subsides. This has occurred many times before and will naturally happen this time too – the long-term net affect is the most critical, not short-term storm fluctuations.

3. Matarangi Beach: Some indigenous salt-tolerant foredune plants have been removed by the severe impacts of this ‘historic’ storm, but the majority remain intact if battered. These residual plants will naturally colonise the presently barren areas, as time and further storms permit. While some erosion has resulted, other areas planned for planting next autumn have paradoxically accumulated sand, especially at the distal end of Omaro spit, near the midden site. The key features to focus on now is prevention of any further damage to currently impacted plants and to nurture them back to their full growth potential.

### Predicting the Future?

This is always a fraught exercise, but using the best information available from the USA (National Ocean and Atmospheric Administration – NOAA), the Australian Bureau of Meteorology – BOM) plus WeatherWatch NZ are all predicting the following, supplied September 2022: “International models show La Nina ... will likely be gone again over the coming summer”.

More recent NOAA data this January indicates this helpful trend is continuing: “A transition from La Niña to ENSO-neutral is anticipated during the February-April 2023 season”. So, we need to consider getting ahead of these long-term predictions – planting the currently degraded dune lands thus autumn as already planned. And this is most likely to opportunistically occur as La Nina is replaced by more neutral climatic conditions and before the more normal and favourable El Nino conditions and their dominant offshore southwest winds return. Fingers crossed?

Greg Jenks MNZM, Coastal Restoration Specialist

CLIMsystems Associate

Founding Member - International Global Change Institute (IGCI)

ALL HOUSE AND  
PROPERTY  
REPAIRS AND  
MAINTENANCE

25 years' experience

Ph/txt: Andy

022 346 2040

**W.A.N.T**

WAITAIA NURSERY  
& GARDEN CENTRE

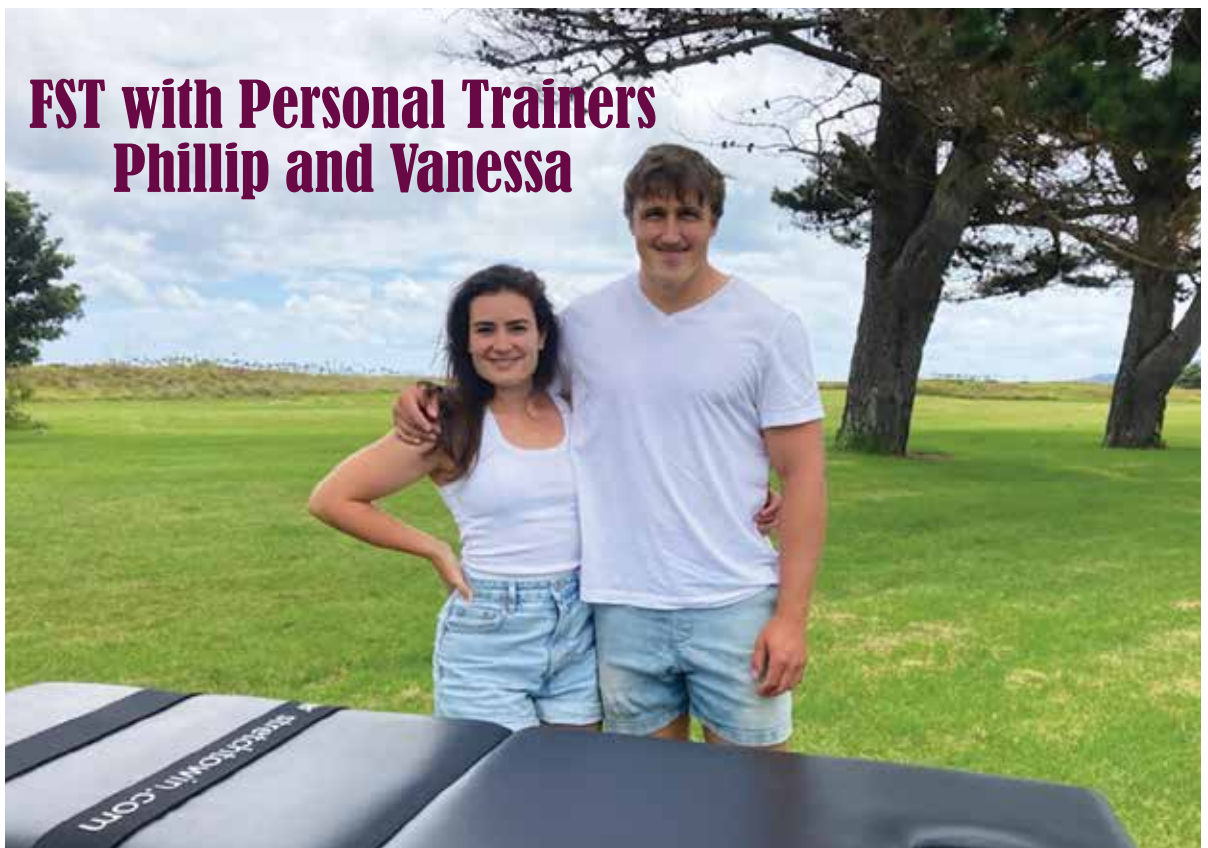
**Citrus  
Fruit Trees  
Palms  
Natives  
Hedging  
+ much more  
Fertilisers  
Compost  
Bulk Compost  
Bulk Mulch  
Plant hire  
for functions**

**Opening Hours**  
**Thurs-Sun 9am-5pm**  
or phone by appointment  
**(07) 869 5910**

**Waitaia Road  
Kuaotunu**

  
**Pool Queen LTD**  
MOBILE POOL & SPA  
CLEANING SERVICES  
Sharleena Tucker  
[www.poolqueen.co.nz](http://www.poolqueen.co.nz)  
**027 316 3384**  
Coromandel Peninsula

**R 'n' R  
Lawns**  
ROB FISKEN  
LAWNS MOWED WITH PRIDE  
Phone/Txt: 0210 226 8029  
[rnrlawns4u@gmail.com](mailto:rnrlawns4u@gmail.com)



## FST with Personal Trainers Phillip and Vanessa

Phillip Lelievre and Vanessa Tremoulet of Move Well Fit are excited about introducing Fascial Stretch Therapy or FST to the people of the Coromandel. The Matarangi based certified physical trainers recently returned to New Zealand after 4 years of working and studying in Vancouver, Canada where they were first introduced to the FST approach.

Fascial Stretch Therapy is a unique form of assisted stretching, it's done on a massage table using stability straps used to pin down a limb so the stretch therapist can get better leverage when stretching the other limb. "Fascial Stretch Therapy focuses on opening up the joint space, relaxing the nervous system and it's hold of tissue on the body, lubricating the joints, and easing tension on the body. This whole system is focused on the network of Fascia that is throughout your entire body. Fascia is the most common connective tissue in the body. It is what connects muscles, joints, bones and even organs," says Phillip.

"Think of it like a net covering the entire human body. When this net gets tight in one area (of the body) it affects the entire body, that is why when often a person gets injured in one part of their body, more injuries pop up throughout the body. When we are immobile, from lack of movement. This net becomes thicker, and can make movement difficult or even painful."

Phillip and Vanessa first met in Sydney during 2018 when Vanessa who was born in Bordeaux, France, was on her OE and working as an au pair following her Business degree. Phillip who grew up on the Thames Coast was at the time working for a Geo-Tech drilling company. They soon discovered their interest in physical health and well-being and their

background in logistics. Vanessa had specialised in International Logistic Systems at university whilst Phillip following Thames High School served 5 years in the Royal New Zealand Logistics Regiment including playing rugby for the NZ Army team.

During their time in Sydney they both embarked on their journey to attain their Physical Trainer qualifications, with Vanessa deciding to stay in Australia with Philip and begin working as a set designer in the film industry and not return to France. However after issues getting residency for Vanessa in Australia, the couple decided to continue their travels and headed to Canada.

During their time in Canada the couple worked together as personal trainers and undertook further qualifications including their FST training course in Toronto. After 4 years mostly living in Vancouver and getting through the pandemic, the couple began to be drawn back down under. This time to New Zealand and the Coromandel where Phillip grew up. With his mum and dad Glenn and Bev Lelievre living in Matarangi and wanting to be closer to family and the beach lifestyle after big city life, where they were to be based was easily settled.

Returning home last October the couple have started their company Move Well Fit, which offers mobile stretching and personal training services to anyone, regardless of fitness level and age. Check out their website [www.movewellfit.com](http://www.movewellfit.com) to find out more about what they can do for you or give them a call on 027 956 7622 (Vanessa) or 027 630 6842 (Phillip) for a friendly chat about getting fit and healthy for 2023.

  
**Mark Hall**  
Owner / Principal (Licensed Agent REAA 2008)  
MOBILE: 021 607 135  
OFFICE: 07 866 55 66  
EMAIL: [mark@beachrealty.co.nz](mailto:mark@beachrealty.co.nz)  
[www.beachrealty.co.nz](http://www.beachrealty.co.nz)

  
**Logic AV LTD.**  
Audio Visual Design, Supply and Installation  
Control 4 Smart Home Installer  
Professional Wi-Fi Networks  
[james@logicav.co.nz](mailto:james@logicav.co.nz) 021 781 971

  
**NZ Rangehood  
Installers Ltd**  
0800 080 224  
[info@rangehoodinstallers.co.nz](mailto:info@rangehoodinstallers.co.nz)  
[www.rangehoodinstallers.co.nz](http://www.rangehoodinstallers.co.nz)

Fire supply, consent and installation  
Mobile showroom - We come to you!  
Phone Kevin 027 276 7522  
Email [whitianga.plumbing@extra.co.nz](mailto:whitianga.plumbing@extra.co.nz)  
  
**PlumbCert**  
HEATING SPECIALISTS



# OUR COROMANDEL



News from Thames-Coromandel District Council

February 2023

## Mounting costs for Cyclone damage

**Ex-Cyclone Hale left a huge tail of damage across our district, from slips and flooding to significant coastal erosion.**

Our Council's staff and contractors have already started urgent repairs and as the

clean-up continues, our Mayor Len has written to Emergency Management Minister Kieran McNulty, seeking financial assistance from the government to lessen the impact on our ratepayers.

"While no exact cost figures are confirmed yet, we expect the bill to repair the coastal areas will run into serious six figures," says our Mayor Len. "We've made a start removing debris, and fixing and fencing off infrastructure and assets along the coast that have been damaged and are unsafe to use. A significant challenge lies ahead, but together as a community, we can get there."



## KERBSIDE CHARGES TO CHANGE

Changes in our kerbside rubbish collection this year, when a different provider takes over our solid waste services, is one of the big issues we'll be publicly consulting on as part of developing our 2023-2024 Annual Plan.

From 1 September 2023 the blue rubbish bags are going to be replaced with wheelie bins and we'll also be introducing a kerbside household food waste collection.

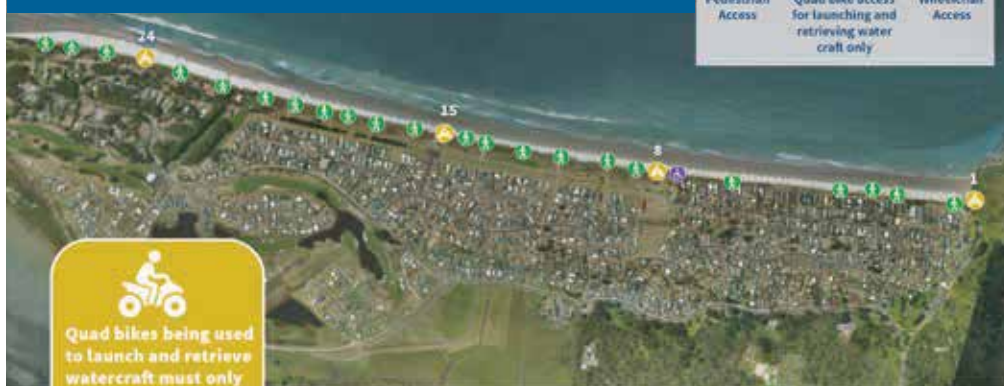
How these changes are funded is currently being developed as part of the process of our Annual Plan, which sets out our project delivery and budgets for the next financial year (1 July 2023-30 June 2024).

Our Annual Plan 2023/24 is year three of our 2021-2031 Long Term Plan (LTP). There will be public consultation to get your feedback on any changes that are significantly different to what we forecast in our LTP for 2023/24.

We'll be asking for your feedback in March/April this year, and we'll deliberate on submissions at our 17 May meeting.

The final Annual Plan 2023/24 will be adopted at our Council's meeting on 28 June.

## MATARANGI BEACH ACCESS



Quad bikes being used to launch and retrieve watercraft must only use beach access points 1, 8, 15 and 24.

Go to [tcdc.govt.nz/coastal](https://tcdc.govt.nz/coastal) for more information.

## Summer Kerbside Schedules

Our summer period of extra kerbside rubbish and recycling collections across most of the Coromandel ends on Friday 10 February. From Monday 13 February we resume our regular non-summer collection schedule. Check the schedule for your area at

[tcdc.govt.nz/kerbside](https://tcdc.govt.nz/kerbside)

Our seven Refuse Transfer Stations (RTS) are open to extended operating hours until Sunday 19 February. From Monday 20 February they are open to their regular non-summer hours. Check the RTS locations and operating hours at

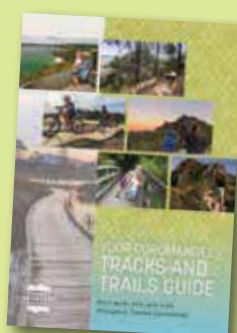
[tcdc.govt.nz/rts](https://tcdc.govt.nz/rts)



## Your Coromandel Tracks and Trails Guide

The updated edition of our popular Tracks and Trails Guide is now available free from information centres, public libraries and Council offices.

The online version can be downloaded at [tcdc.govt.nz/tracksandtrails](https://tcdc.govt.nz/tracksandtrails)



Mercury Bay  
Community Board  
**UPDATE**

### A word from our Board Chair Krissy Robinson

"Our new Community Board met for the first time in November last year, along with our three Councillors. The surge of passion and enthusiasm for our community was apparent. While we have some drastic changes affecting our community at the moment, it's good to know we have caring and capable hands at the helm."

[krissy.robinson@council.tcdc.govt.nz](mailto:krissy.robinson@council.tcdc.govt.nz)



**The Board's next meeting** at 9am on Tuesday 8 February at the Mercury Bay Service Centre, 10 Monk St, Whitianga.

To speak in the public forum, contact [governance.services@tcdc.govt.nz](mailto:governance.services@tcdc.govt.nz). Agendas are published two working days before meetings at [tcdc.govt.nz/meetings](https://tcdc.govt.nz/meetings) where you'll also find recordings of each meeting.

[@ThamesCoromandelDistrictCouncil](https://www.facebook.com/ThamesCoromandelDistrictCouncil)

[coromandel\\_tcdc](https://www.instagram.com/coromandel_tcdc)

Get our free eNewsletters!  
[www.tcdc.govt.nz/subscribe](https://www.tcdc.govt.nz/subscribe)

[tcdc.govt.nz](https://tcdc.govt.nz)

[customer.services@tcdc.govt.nz](mailto:customer.services@tcdc.govt.nz)

Private Bag, 515 Mackay St, Thames

Phone: 07 868 0200



## The Matarangi Fire Report

Our Community's backbone is built on the endless commitment of volunteers from many organisations. Originally there were just a handful of permanent residents in 1989 when the MRVFF was created. Over the course of years as the population has grown, other working groups were needed such as the MRAI, Reserves Committee, Community Trust, Community Patrol and now just a few years ago the Emergency Management Group. They are all there looking after your wellbeing and safety. Matarangi residents can be rest assured that these volunteers have your back!

During the recent events such as Cyclone Hale and the many tropical storms that have battered the Coromandel Peninsula, Matarangi has shown a high level of robustness and resilience geographically to avert any larger scale emergency. We have certainly been affected by the multiple and continuous road closures. These events are shaping the way we train and respond when needed. It also allows us to plan ahead and have the needed resources when required. We also recommend that each residential owner should have their own safety plan, including a network of contacts if needed and a chilly bin with your emergency necessities.

Stay Safe, Mark Hall (Chief Fire Officer)

## Where in the WORLD is the Matarangi Beach Paper?



Mary & Teresa, the MBP's Deputy Editors, recently spent a marvellous Christmas and New Year in Ireland. While staying in Hollywood, Co. Down they paid a visit to the Hollywood Golf Club, home of World No.1 Rory McIlroy.

In his career so far McIlroy has won every major title except for the US Masters and along with Jack Nicklaus and Tiger Woods, is one of three players to win four majors by the age of 25. Proudly on display at the club are the trophies from these wins, the British Open, US Open and PGA.

While visiting the club, Mary and Teresa were privileged to be allowed to have his US Open trophy photographed with the MBP!

## Fascial Stretch Therapy



Get a 30 or 60 minute assisted stretch from the comfort of your own home by the qualified physical training experts of the Matarangi based Move Well Fit Team

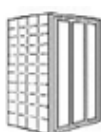
For all Inquires contact  
**027 630 6842**

**Holistic Health MASSAGE**

992 Te Rerenga - Matarangi Rd  
Between Kuaotunu and Matarangi  
On the Highway

Contact: Bronwyn Rinui  
M: 021 158 4774  
bronwynsmassage.com

## Peninsula GLASS & SCREENS



For all Glazing Work  
Window & Door Repairs - Insurance Work  
Cat & Dog Doors Fitted - Mirrors - Shower Doors  
Table Tops - Security & Insect Screens

Campbell Street,  
Whitianga  
P.O. Box 169

Ph: 07 866 4180  
Fax: 07 866 4862

## PESTIE CORNER

Well, here we are in the middle of another cyclone. Where has Summer gone, we ask ourselves? It's a question bugs never ask. They just take advantage of what the conditions give them and a great one for taking advantage are bed bugs. Adult bed bugs are small (3-5mm), oval, wingless parasitic insects. When they have recently fed they will be reddish brown, but when they haven't fed for some time they will be pale and almost translucent. When just hatched from eggs, bed bugs are tiny (only just visible to the naked eye) and pale.

Bed bugs hide in cracks and crevices during the day and come out at night to feed on blood. They are attracted to their food source (us) by body heat and carbon dioxide from our breath and feed by using their hypodermic like mouth parts to penetrate the skin injecting 'saliva' which contains anticoagulant proteins to stop your blood clotting. They will feed and it is the proteins in the saliva that cause itchy inflammation reactions and reddened marks in about 50% of people they bite. Some people have no reaction to the bites so will be unaware that they have an infestation.

The first sign of infestation may be blood or bed bug faeces marks (like a tick with a black ballpoint pen) on sheets, and you will find the bugs hiding in seams of mattresses, bed frames, behind wallpaper, in spaces behind skirtings, seams of curtains, electrical sockets, under the edge of carpets and in furniture. These bugs ingest up to seven times their own body weight in blood in one feed and can survive long periods between feeding. After mating takes place, bed bugs will lay up to 200 eggs. The nymphs that hatch out are miniature versions of the adult. There is no larval stage. The nymphs will moult several times over a period of 6-18 months before becoming an adult.

It is not true that bed bugs are a sign of a 'dirty' home. Bed bugs will infest the cleanest home, hotel/motel or backpackers. They are easily transported in luggage and other items moved from one sleeping place to another, so do not leave bags on motel beds. Spraying the entire area is the only way to remove bed bugs from rooms. All furniture should be dismantled if able and sprayed, all mattresses turned on their sides and all seams sprayed and left in the sun. All skirting boards and cupboards inside and out should be sprayed with an insect growth inhibitor to ensure all eggs and hatching insects will be killed. Seal the room and do not enter for at a minimum of at least 3 hours. Any bedding or materials should be washed in a commercial laundry or in a machine that can wash at over 50 degrees Celsius and then in a dryer again at over 50 degrees. Remember to place all materials in a plastic bag when moving them from place to place, to ensure there is no transfer of the bug.

## Partnership to boost Hauraki Coromandel's Predator Free Goal

Powerco is partnering with Predator Free Hauraki Coromandel Community Trust (PFHCCT) to help make the region's conservation goals a reality. Hauraki Coromandel is moving towards becoming predator free by 2030 and Powerco is excited to be part of the vision, Powerco Customer and Communications Strategy Manager Oliver Vincent says. "By partnering with PFHCCT, we're in turn supporting 60-plus community conservation groups who look after the Hauraki Coromandel environment.

"We're looking forward to seeing how this partnership will benefit these communities socially, culturally and economically, as well as the natural environment and biodiversity of the area in the future."

Powerco's partnership sees it support the Trust's field support team – a new service designed to provide practical grassroots help to community conservation groups across Hauraki Coromandel.

PFHCCT Chief Executive Jude Hooson says the organisation is grateful for Powerco's support. "Powerco has backed this project from its inception and has been a critical early partner for us. Conservation work can sometimes feel relentless and overwhelming, and this new team is providing practical grassroots help with tasks big and small to protect our natural treasures in this biodiversity hotspot."

## WHITIANGA WINDOWS AND LAWNS Property Services

- \*Window Cleaning
- \*Bathroom Glass Cabinets
- \*Lawn Mowing
- \*Paths and Driveways Cleaned
- \*House Washing
- \*Cobweb Removal
- \*Rubbish Removal
- \*Garden Tidy Up

Contact: Kevin on 021 125 4041 Email: whitewinds@gmail.com

One off, or repeat services in the Whangapoua, Kuaotunu and Matarangi areas.  
Competitive Prices by Mutual Agreement. Prompt and Thorough Service. 15% Gold Card Discount.

## SOLAR ENERGY SPECIALIST

Residential Grid Connected Systems  
OFF GRID LIFESTYLE Energy Systems

**GOOD ENERGY**

SOLAR ENERGY SOLUTIONS  
DESIGN, INSTALLATION & SERVICE  
[www.goodenergy.co.nz](http://www.goodenergy.co.nz)

Email: [info@goodenergy.co.nz](mailto:info@goodenergy.co.nz)

Sales 021 606 835 - Technician 021 242 3394





## CARDBOARD CUP A CLASSIC CAPSIZE CAPER



One of the last events of the Matarangi Summer Festival before Ex-Cyclone Hale hit was the Cardboard Cup. The marginal conditions meant that only three hardy boats were entered as rain threatened and winds were already very blustery. However a great crowd of a few hundred spectators came on down to the wharf to witness the cardboard Captains rule the waves. Simone, Keith, Shelley and Kayla from the Richardsons Real Estate team where once again on hand to make sure all went well and prizes were duly handed out. Simone look relieved that they were able to sneak in their event before the weather turned to custard. The winning vessel was G22, a speedy Kayak type design, ahead of Titanic and Winer Winner Chicken Dinner which both had spectacular capsizes.

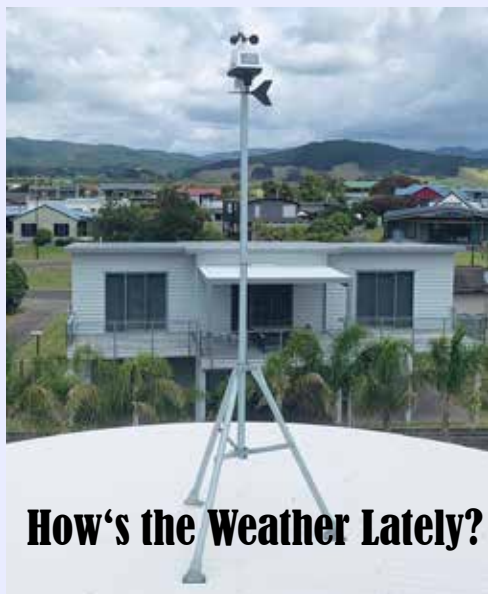


## Peninsula Pests Services Ltd.

Certified & Approved Urban Pest Control. We are trained and equipped to control the following:

- All crawling & flying insects
  - wasp removal
  - rodent eradication
  - spider infestations
- exterior house wash services
  - residential and commercial services

Call Steve or Sharon  
on 027 7788836 or email  
penpest.nz@gmail.com



## How's the Weather Lately?

The talk of the town over the past month has been the weather and how it has affected everyone's holidays. The golf course being too wet to play, the seas too rough to take the boat out for a fish and stormy weather not being conducive for sunbathing down on the beach. So awful in fact, that the second week of the Matarangi Summer Festival had to be cancelled as ex Cyclone Hale pounded the summer fun out of us all.

Grant Archibald of Puka Cres has a Davis weather station on his roof and thought that the readers of the MBP maybe interested in some of the recent weather stats that his station has discovered. According to Grant, 2022 was a fairly wet year with almost 1550mm of rain recorded. The month with the highest rainfall was July with 294mm. November too was especially unseasonal with over 211.8mm of rainfall recorded. However, this past month after being lashed with wave after wave of stormy weather 407.4mm of rain fell with the wettest day being 10th January with 109.2mm of rain on that day alone. During January 2022 just 56.1mm fell during the entire month.

The hottest Matarangi day during 2022 was back on Jan 17th with a sizzling 28.7 degrees celsius being recorded at 2.37pm. At the other extreme the coolest day recorded by Grant last year, was on the 7th of October with a brisk 1.5 degrees celsius being recorded at 6.24am in the morning. The highest temperature recorded over January 2023 was 27.6 degrees celsius recorded at 3pm on January 21st.

The biggest wind gust to whip through Matarangi during 2022 was on the 13th of February 2022 which broke the speed limit when it topped 102.6 km/hr. This past month the highest wind speed recorded by Grant reached 78.7 km/h (ESE) on the 10th of January.

To access Matarangi weather data download the free Met Service Smartphone weather app which provides up to date information at: <https://about.metservice.com/our-company/ways-to-get-the-weather/weatheron-your-mobile/smartphone-apps/> to download the App.



Contact John 0276 4 25654

- \*residential / commercial construction
- \*retaining walls
- \*renovations and extensions
- \*fencing and decking
- \*project management
- \*design and builds

## BOBCAT HIRE

Preparation of Building Sites & Driveways  
Section Clearance / Landscaping  
Owner Operator / Years of Experience

**BRUCE GODDEN** 021 966689

Located at Kuaotunu After Hours 07 2800188

### BOBCAT and Truck Hire

- \* Building Site & Driveway preparation
- \* Post Hole Boring
- \* Trenching
- \* Metal & Topsoil Supplies
- \* Section Clearance / Landscaping
- \* Experienced Owner / Operator



Matarangi Based

Brendan O'Connell

M: 0274 934 212

A/H: 07 866 0505

"WE MAKE THE EARTH MOVE"

## Hatha Yoga

... with Jose  
Kakebeeke

Tuesdays 10 – 11.30am  
Thursdays 9 – 10.30am  
Fridays (3rd Age Chair Yoga)  
9 – 10.30 am  
Venue: Kuaotunu Hall

Sessions:  
\$15 Single,  
10 Concession Card  
\$130, &  
Gold Card \$10

Ph: 021393299 or 078664888 /  
jose.kakebeeke@gmail.com

## Matarangi Ratepayers Association. Inc.

- Working hard on your behalf to protect and preserve community values and amenities.
- Our success depends on your support.

For details on how to join, go to:  
<https://www.ourmatarangi.com/join>



**MATARANGI  
MONITORING  
SERVICE**

safe • secure • local

### Alarm Monitoring & Installation

Bronwyn Blake  
208 Matarangi Drive  
R D 2 • Whitianga 3592

Bronwyn 021 023 11130  
matarangimonitoring@gmail.com  
www.matarangimonitoring.co.nz

# PREBUILT HOMES



**Available Now - 2 & 3 Bedroom Homes**

starting from only \$210,000 incl gst

We build quality timber interior homes locally in Whitianga. All our homes come complete with all flooring, Fisher & Paykel appliances, heat pump and curtains & blinds. So all you need to do is move in your furniture and start enjoying your new home!

**To arrange a viewing or further information contact:**

Kevin Evans 027 497 1183    evanshomes@xtra.co.nz  
www.evansgroup.co.nz

evans group ltd



Urban Homes builds homes with integrity and relationships with our clients that last for generations.

We pride ourselves on delivering a world class building experience and offer peace of mind through our fixed-price 10-year Master Builders contract.

If you have a section you are looking to build your dream home on, we have an extensive range of house plans that can be customised to suit your lifestyle and budget.

Our House and Land packages in Matarangi and Whitianga are selling now.



CONTACT ME TODAY

**Mark Kerr**

New Home Consultant

021 844 496 | mark.kerr@urban.co.nz



urban.co.nz/coromandel



\* Offer available until 28/02/2023 or while stocks last.

# SUMMER STOCK SALE!

**20% OFF STOCK LAMINATE & VINYL FLOORING\***

**WHITIANGA FLOORING XTRA**

**BOOK NOW FOR YOUR FREE MEASURE & QUOTE!**  
07 8662836 | 68 ALBERT ST, WHITIANGA






**Drapery and Blinds Specialist**

Book Your **FREE** In-Home Consultation Today

Including a **FREE** Measure and Quote.





✉ studio@taraking.co.nz

☎ 0210391086

📘 @tarakinginteriors

📷 tarakinginteriors





**Simone Parr**  
Licensed Agent REA 2008  
**027 657 2980**



**Keith Goodall**  
Licensed Salesperson REA 2008  
**021 276 6474**



**Peter Sharp**  
Licensed Salesperson REA 2008  
**021 388 833**



**Daisy Armstrong**  
Licensed Salesperson REA 2008  
**027 277 2405**

**Buying, Selling or Renting  
we have your property  
needs covered.**



**Richardsons**  
Real Estate Ltd MREINZ / Matarangi  
Licensed REAA2008

*Call the team today*

 **07 866 0322**  
 **matarangi@richardsons.co.nz**  
 **www.richardsons.co.nz**



**REVELL  
ARCHITECTURAL  
DESIGN**

- New home design and draughting
- Alterations and additions
- Resource and Building Consent applications
- 3D rendering
- Landscape design

**Scott Revell**  
NZDipArchTech  
**027 861 6592**  
**scott@revelldesign.nz**  
**www.revelldesign.nz**





**Garador™**  
Your Garage Door Specialists



- \*Sectional, Roller & Tilt doors
- \*Insulated options
- \*Automatic openers and remotes
- \*Service /maintenance repairs
- \*Security grills and shutters
- \*Insurance quotes
- \*Free measure & quote

**Carswell Construction Ltd - Ph: 0800 374 000 or 07 86 88663**  
**info@carswellconstruction.co.nz    www.carswellconstruction.co.nz**

**Scott Simpson**  
MP for Coromandel

**Contact me anytime**  
0800 550 330 • [scottsimpson.co.nz](http://scottsimpson.co.nz)  
[mpcoromandel@parliament.govt.nz](mailto:mpcoromandel@parliament.govt.nz)  
📍 [scottsimpsonmp](#)





Authorised by Scott Simpson, 614 Pollen St, Thames.

**PROUD  
TO BE  
LOCAL**



**TUNE INTO**

**EAST COAST 95.1 FM**

**WEST COAST 94.0 FM**

**LISTEN ON**

**iHeartRADIO**



*A Cup of tea & happy memories*

There is something special about a warm cup of your favourite. It reduces stress and gives you a moment to reflect, organise and assemble your thoughts. A cuppa is all you need to start a pre-arrangement for your funeral with one of our funeral directors. Start a conversation today.

**TWENTYMANS**  
FUNERAL DIRECTORS  
*Since 1867*

**07 868 6003**



**TWENTYMANS.CO.NZ**

# SCHOOL BELL



We are excited to start our 2023 school year and welcome back our learners after their summer holidays and Princess Thomas -Whittaker who is coming back back from being on parental leave. We also welcome our new students who will be starting their learning journeys at Te Rerenga School. Having such turbulent weather this week is certainly not the start we were hoping for, having to resort to learning from home right on Day One. Let's hope some warm sunny weather will now prevail for an extended period. Our community and many other parts of the country certainly deserve it.

We are starting the school year with five learning spaces and the organisation is as follows: -

Ruma Moana - Year 1 - Shelley Corles  
Ruma Whanga - Year 2 - Darrell Adshead  
Ruma Wairere-Awa - Years 3&4 - Fiona Watts & Jennifer Commins (this is a shared teaching-learning space in our hall while we wait for our new double classroom)  
Ruma Maunga - Years 5&6 - Odette Wilson  
Ruma Rangī - Years 6,7&8 - Kristin Street & Princess Thomas-Whittaker

Also on our team are:-

Office Administrator: Danielle Threadgold  
Caretaker/Cleaner: Howard Collins  
Learning Assistants: Carolin Hahn, Shayna Maiden  
Learning Support Coordinator: Kelly Krivan  
Music: Maria Dove

I look forward to sharing with you all our news and events throughout 2023.

Ma te huruhuru ka rere te manu  
Adorn the bird with feathers to enable it to fly.

Mary Kedzlie  
Principal

## THANK YOU STU & MARYANN

Stu and Maryann Arnold quietly snuck out of town just before Christmas without the MBP having a chance to say goodbye and wish them well in their retirement in Paeroa. For 14 years Stu was our Fire Chief and was loyally supported in this role by Maryanne. The MBP wishes Stu and Maryann all the best in their new home and thanks them for their community involvement over the years.

# THE FISHING REPORT

## Matarangi Boat & Fishing Club



I hope that you all have had a relaxing Christmas and New year and are ready to get out on the water for some fishing, weather dependant of course.

The bar crossing seminar run by Peter Murphy late December was well attended. Thank you for coming along to listen to the informative talk given by Peter. For those that couldn't make it there is a video on our Facebook page on how to cross a bar safely in a trailer boat.

What a great start to the 2023 Fishing year, even though the weather didn't play ball for a period of time. There have been 3 marlin weighed in so far.

Jeremy West – tag and release Stripe Marlin – estimated weight 80 kg – onboard Jimmy Ruffin.

Warren Oliver – tag and release striped marlin – estimated weight 85kg – onboard Tickety Boo

Richard Wilkinson – Stripe Marlin – 96.6kg weighed in – on board EzyLife

Congratulations to Jeremy, Warren and Richard. Warren is a fishing club member so as this report goes to print he is leading the Most Tagged and Released Billfish section, Champion Boat and Champion Angler at this stage.

We had to postpone our 2nd January Fishing Tournament due to the weather conditions. This is now taking place 5th February 2023. Details will be on our website and Facebook page and published in our next fishing report. Thank you to our sponsors in this tournament. The next event on the Fishing Club calendar is the Ladies Doris Day Out Tournament on the 4th March 2023. Keep this in mind ladies and let's see if we can get more anglers out on the water than we did last year. It is a great day with some awesome prizes and spot prizes to be won. Details for this competition will be on our website and Facebook page early February so keep an eye out. Tickets sales will be online only this year.

You can keep up to date with news on our website [www.mbfco.co.nz](http://www.mbfco.co.nz) and Facebook page <https://www.facebook.com/matarangiboatandfishingclub>

**DON'T TAKE RISKS. IF IN DOUBT, DON'T CROSS THE BAR. WEARING A CORRECT FITTING LIFE JACKET IS A LEGAL REQUIREMENT WHEN CROSSING A BAR.** The WHITIANGA COASTGUARD can be contacted on CHANNEL 63 and the NOW WEATHER REPORT is on CHANNEL 20.

Safe boating and limit your catch, don't catch your limit! - Howie Taylor



## TEN YEARS ON IN THE MBP

Ten years ago the MBP reported on all the planning for the very first 'A Taste of Matarangi' that was to be held on April 20th. How great that we will have this successful festival event back this year that showcases how special this community is.

It was also announced that Rod Millen was organising for March, the Leadfoot Festival at his ranch in Hahei, a weekend that would bring together a mix of classic cars, vintage motorcycles, formula and road race cars and motorsport legends. Shirvani and Mark Hall also welcomed their first son, iZac Hemi Hall.

Local businesses reported on a magic summer. The Matarangi General Store was the largest seller of icecream on the peninsula and The Dunes had a bumper season both on the golf course and the restaurant. Let's pray that we will be able to report that next summer will be as great as the summer of 2012/13!

**MAXFIT**

- MOBILE PT SESSIONS
- OUTDOOR TRAININGS
- GROUP FITNESS

Deborah Maxwell 021 973 265  
maxfitfitness2021@gmail.com  
www.maxfit.fitness

**COROMANDEL**

**BUILDING CENTRE**

**PH: 866 8848**

*"We'll see you right"*

**Grant Foote**

**Painting & Decorating**

Locally owned and operated

**Quality Workmanship - 25 Years Experience**

Interiors and Exteriors

**Ph: 0274 343610**

Email: glfoote@xtra.co.nz

**The BIKE Man**

**16 Coghill St Whitianga**  
**07 866 0745**

**For Bicycle Sales, Repairs, Parts, Accessories, and Hire**

**G & J ELECTRICAL SERVICES LTD**

**Installation & Repairs**

Glenn Griffin  
Registered Electrician

P: 021 981 058 or 866 0350  
E: j.griffin@xtra.co.nz

Authorised Service Agent: Renhardt/Hotstream

**A Taste of Matarangi**  
**1 April 2023**





## Golf Shop hours:

Monday & Tuesday 9am-1pm  
Wednesday- Friday 9am-Dusk  
Saturday & Sunday – 8am - Dusk

## Bar and Restaurant hours:

Mon & Tues – Closed  
Wednesday -12pm – 5pm  
Thurs -Sat – 12pm – late  
Sunday – 12pm-5pm

Fridays - Happy Hour 4-6pm

## Coming Events:

4th-6th – Waitangi Day Weekend, Fri- Sun  
Pizzas from 3pm, Sunday Live Music with  
Dave Kennedy

14th Tuesday Valentines Day – 2 course set  
meal with drink included. Oyster Special

18th Saturday- Battle of the Beaches –  
Matarangi vs Whangapoa vs Mercury Bay Golf  
Tournament

4th March – Prabs Farewell Party – Traditional  
Indian buffet

## For Bookings:

Call (07) 8665394  
Email: [admin@thedunesmatarangi.com](mailto:admin@thedunesmatarangi.com)  
Further info is at [www.thedunes.co.nz](http://www.thedunes.co.nz)

741 Matarangi Drive, Matarangi



THE DUNES  
MATARANGI

A TASTE OF  
**MATARANGI**  
1 APRIL 2023

TICKETS \$25

SEARCH & RESCUE  
LAND SAR  
KUAOTUNU

TICKETS SELLING NOW

**atasteofmatarangi.co.nz**

A FABULOUS DAY OF FOOD, DRINKS & MUSIC BY THE BEACH!

ALL ABOUT  
**WHITIANGA**  
Connected

**creativefuel**  
networks, brands and campaigns

**/Richardsons**

**CFM**  
COROMANDEL

**WINTON**

**4**  
SQUARE

**MATARANGI**  
RatePayers Assoc. Inc.

**PURU & KERRES**  
COASTAL PROPERTY MANAGEMENT

**HOLISTIC**  
HEALTH

**THE MATARANGI**  
BEACH PAPER

**MAHARU WAI**

**bachcare**  
100-1000 ROAD WAIKANA

# CHANGE YOUR SCENE WE'RE HIRING

Flexible working, fantastic culture,  
enviable lifestyle.

[tcdc.govt.nz/jobs](http://tcdc.govt.nz/jobs)

THAMES  
COROMANDEL  
DISTRICT COUNCIL

# ARTS SPACE

Anniversary weekend saw another excellent and well supported Ten Artist exhibition in the Kuaotunu Hall. This time the Artists were pleased to have renowned painter Warrick Lidgard as part of the exhibition team. Making an appearance at ten artists for the first time was young Kuaotunu artist Hannah Coleman-Smith who impressed with her portraits.

Looking ahead to later in the month Isabel Gilbert Palmer and Roi Taimana our local representatives on the He Mana Toi Moehau Trust / Creative Coromandel are inviting the public to a special meeting to explore future creative initiatives in the district.

Former Matarangi resident Hilary Falconer, an arts consultant, and Trustee of Creative Coromandel will facilitate the open discussion. Creative Coromandel is now carrying out a review led by Hilary of the TCDC-adopted Arts and Creative Industries Strategy. Hilary Falconer undertook the initial consultation and drafted the first strategy document for TCDC 8 years ago.

Roi and Isabel are encouraging the community to "Save the Date" of Sunday 26 February 2023 between 2-4pm to your diary and come along and attend this important creative arts focused session at the Kuaotunu Hall which will help plan where to next with respect to the Creative scene on the Coromandel.

An independent Charitable Trust formed in 2016, Creative Coromandel consists of 12 Trustees from across the Thames-Coromandel District. Assisted by two part time contractors, it is the role of the Trust to implement the Coromandel Arts and Creative Industries Strategy. The Trust is keen to hear from you, the artists of our rohe: makers, creatives experienced and emerging, our arts leaders and arts audiences, our writers musicians, poets, environmentalists, children's activity organisers, food forest supporters, film club dreamers, gardeners, book clubs and garden clubs; any number of you who bring the art of living and creativity into our community. Creative Coromandel wants to learn more about your perceptions and ideas and how we can work together to enhance and enliven where we live.



Meg Graham was thrilled with her purchase of a Hannah Coleman-Smith painting.

## ARE YOU FESTIVAL READY??



a charity bucket drop supporting our event charities – Kuaotunu Search & Rescue and Te Rerenga School.

If you need transport to and from the festival, checkout the website for available providers. Pre-bookings are essential. If you've managed to book accommodation in Matarangi, walking will be your best form of transport or you can organise a designated sober driver to get you home safely.

Have a look at our website for more information on musicians, food & beverages, terms & conditions, charities, sponsors, the kids zone, become a volunteer and how to get there!

Purchase your tickets now at [www.atasteofmatarangi.co.nz](http://www.atasteofmatarangi.co.nz) \$25.00 Adult, \$5 a child (5-17yrs) under 5yrs free.

Many thanks to our supporting partners – All About Whitianga, Creative Fuel web design, Richardson Real Estate Matarangi, CFM Coromandel, Winton Beaches Matarangi, Matarangi Four Square, Puku & Kerre's Liquor, Matarangi Beach Paper, Matarangi Rate Payers Assoc, Holistic Health, Barrier Air, Felicity Jean Photography, Bachcare, Matarangi Plumbing

**DOORS2000**  
COROMANDEL LTD

**We Install Garage Doors Peninsula Wide**

Roller & Sectional Doors  
Aluminium Slat Doors  
Steel Roller  
Colorsteel  
Smooth Panel  
Cedar  
Architectural  
Insulated Garage Doors

For a free quote phone or email Greg Wilshire on:

0274 952 760 or  
[doors2000nz@xtra.co.nz](mailto:doors2000nz@xtra.co.nz)

[www.doors2000.co.nz](http://www.doors2000.co.nz)



**MATARANGI**  
PLUMBING

ANDREW RICHARDSON  
CERTIFYING PLUMBER

0274 712 247

[MATARANGIPLUMBING@GMAIL.COM](mailto:MATARANGIPLUMBING@GMAIL.COM)

The countdown has started for this year's 8th A Taste of Matarangi festival which brings an amazing line up of musicians to the stage on the 1st April for an incredible day out next to Matarangi Beach. Sample some beautiful wines & locally brewed beer and match them with the fantastic food selection available from up to 16 food vendors.

Get there early if you want to find a shady spot under the large stretch tent. There is limited space for small gazebos but you can bring a small beach umbrella and deck chairs or just a picnic blanket and relax for the day.

There will be activities for the whole family, not just those who look forward to tasting wine, sampling delicious food and listening to great music. Event fun rides and bouncy castle, colourful clowns, face painting, raffles, auctions and

**LIVE IT UP**

@ the Happy Local Hub

**LEANNE HALLIWELL**

BCApSc ND BHSc

**NATUROPATH & HERBAL MEDICINES**

Member of the New Zealand Association of Medical Herbalists

**Phone: 0274 588 626**



**GOOD AS GOLD**  
PAINTING & DECORATING  
MATARANGI

Steve Threadgold 022 064 8932 [goodasgoldpainters@gmail.com](mailto:goodasgoldpainters@gmail.com)

**YOUR LOCAL PAINTERS**

**MATARANGI DRAINAGE**  
Registered Drainlayer

- \* For all your Sewage & Storm water requirements
- \* Certified Installer of Septic Tanks
- \* Site & Floor Preparations
- \* Footings & Drillings
- \* Truck & Digger Hire
- \* Metal & Topsoil Supplies

**Contact Brian Ph: 07 866 5432 / 021 477 478**



**DOUG RUSSELL**  
PLUMBING  
*for a prompt response*

021 130 8745  
(07) 866 2175 KUAOTUNU

Whangapoua  
**BUILDERS**



**Kevin Adlam**  
021 632 929

[whangapouabuilders@vodafone.co.nz](mailto:whangapouabuilders@vodafone.co.nz)  
[www.whangapouabuilders.co.nz](http://www.whangapouabuilders.co.nz)



**Coromandel**  
Garage Doors

For new doors,  
auto openers  
and full maintenance  
and repair service.

Don McLean 022 453 2188  
[corogaragedoors@gmail.com](mailto:corogaragedoors@gmail.com)  
[www.corogaragedoors.co.nz](http://www.corogaragedoors.co.nz)





**10% off  
all  
Whiskey**

**Opening Hours  
Seven Days a  
week from  
10am to 7pm.**

**Open 7 Days  
10-6pm**

**07 866 5957**

[pukuandkerre@xtra.co.nz](mailto:pukuandkerre@xtra.co.nz)



**Our lawyer visits your home  
or business anywhere in the  
Peninsula at no extra cost.**



Want to know more?  
Call Trish on:

**020 4171 4916**

[www.mobilelawsolutions.co.nz](http://www.mobilelawsolutions.co.nz)



**LAND & VOLT  
SERVICES**

REGISTERED ELECTRICIAN  
LANDSCAPE DESIGN

CONTACT: GRANT  
021 060 0685

[LANDANDVOLT@GMAIL.COM](mailto:LANDANDVOLT@GMAIL.COM)



## Puzzle Corner!

WITH DAVE KEY

### February Sudoku

L		A	U				E	T
				S				U
		M						
	T							
					R	F		
E		U	S				A	
	S						T	
	M		L					
T		L		F		A		

This month the puzzle is a Sudoku where we have swapped the nine numbers for nine letters. The middle line might tell you your skill level.

### January Puzzle Solution

		7	7	7	7	
			4	2	3	
		2	3	3	3	1
	1	5	5	5	4	0
3	1	1	0	8	0	0
3	2	8	9	6	7	1

## Congratulations Corner!

A big congratulations to local residents Robelyn and Simon Dickinson on the arrival of their beautiful baby boy Marcus, who was born at home here in Matarangi on the 16th January. We bet Lucas will be a doting big brother and that proud grandparents, Pauline and Paul Dickinson will be enjoying plenty of lovely cuddles!

## GOOD SORT OF THE MONTH



Our Good Sort this month has to be Shirvani Hall from Beach Realty for all her hard work in organising the Matarangi Summer Festival. Shirvani spent countless hours applying for consents, liaising with the TCDC and planning and advertising the festival schedule. Unfortunately some of the events had to be cancelled due to the atrocious weather we experienced this summer which was disappointing after all Shirvani's mahi. Never the less the good folk of our community really appreciated your efforts and we thank and salute you!



For FEBRUARY with Alastair Brickell

This month we will have a special treat as Comet ZTF will briefly pass through our skies. It will be faint and probably require binoculars to spot but it will be easy to locate in the sky and fun to watch moving rapidly from night to night. It is expected to be at its brightest when in the northern hemisphere so we will have to wait until about February 10 for it to move down our way. Unfortunately a relatively bright Moon will make viewing a bit difficult for the first couple of nights. We can use Mars and the red giant star Aldebaran to help us find it and track its movement as listed below. Do not expect to see a huge streak across the sky but rather a faint fuzzy blob in binoculars or a small telescope; but this is a blob that moves! This is the first decent comet we've had since the spectacular Comet McNaught appeared back in 2007 so try and have a look if you can... it won't be back for 50,000 years!

Venus is a lovely sight low on the northwestern horizon just after sunset as the evening 'star'. It is moving rapidly away from the Sun and will be at its furthest in a couple of months so gradually gets higher in the sky each week before sinking back towards the Sun again. It will then pass behind the sun to reappear in the mornings as the morning 'star' for a few months. Faint Mercury is already on that side of the Sun so is only visible low on the eastern horizon in the pre-dawn sky but is rapidly sinking towards the Sun so will be lost from view soon.

February 8 – There is a good low ISS pass this morning from 5:38am in the SW.

February 10 – The ZTF comet now lies directly to the right of Mars. Look for a faint fuzzy smudge with binoculars before the Moon rises to spoil the show. Another bright early ISS pass from 5:38am in the SW and then again in the evening at 10:17pm in the NW before it disappears into the Earth's shadow.

February 12 – The comet is about halfway between Mars and the fainter red giant star Aldebaran and to the right of both before the Moon rises.

February 13 – The comet is now just below and to the right of the red giant star Aldebaran and there is a bright ISS pass from 9:27pm in the west starting next to Jupiter.

February 14 – Comet ZTF now sits directly to the right of Aldebaran and there will be another very bright ISS pass from 8:37pm in the west near to Jupiter.

February 18 – This might be just about the last chance to glimpse Comet ZTF as it moves further away from us sitting above Aldebaran and is moving much slower now as it heads away. There will be a very low ISS pass in the SE from 8:35pm. The thin crescent Moon lies directly above faint Mercury at dawn in the east.

February 19 – If it is still visible Comet ZTF will lie above Aldebaran and just below and to the left of the brightest star in Orion's shield. The extremely thin crescent Moon sits to the right and slightly above Mercury in the eastern dawn sky.

February 22 – The Moon is now visible in the evenings right next to brilliant Venus very low in the NW sky at sunset.

February 23 – The will be a beautiful line up of the very thin crescent Moon sitting above and to the right of bright Jupiter with even brighter Venus much lower down at dusk.

February 24 – The thin crescent Moon sits above and to the right of Jupiter with brilliant Venus much lower down at dusk and from 10:06pm there will be a short and low ISS pass in the SW.

February 26 – There will be a short ISS pass from 10:03pm in the SW until it disappears into the earth's shadow.

February 27 – The Moon is now to the left of reddish Mars and from 9:14pm the ISS will make a bright but low pass moving below the Southern Cross before disappearing into the Earth's shadow.

February 28 – The Moon now lies just below and to the right of Mars and Jupiter and Venus are at their closest together low in the NW. There will be two ISS passes tonight with the first from 10:24 low in the SW and then again at 10:01pm in the SW west which will be brighter but shorter as it quickly disappears into the Earth's shadow.

GATEWAY GLASS WHITIANGA



**GATEWAY  
GLASS  
& GLAZING**



FOR ALL YOUR  
WINDSCREENS, GLASS &  
ALUMINIUM JOINERY REQUIREMENTS

### SPECIALISTS IN:

- Joinery Maintenance • Glass Repairs
- Auto Glass • Repairs • Splashbacks
- Insect Screens • Glass Showers

*Great friendly service, focused on securing your property promptly – 24 hr emergency call-out service.*

**GATEWAY GLASS & ALUMINIUM**

22 Bryce Street, Whitianga

P: 07-867 1772 F: 07-867 1248 E: [whitianga@gatewayglass.co.nz](mailto:whitianga@gatewayglass.co.nz)

Help from local **Trades and Services**  
**Family Fun Things to do Events**  
 Where to **Shop** The best places to **Eat**  
**Community groups** Getting Married



Find it all in one place!



## EVENTS CALENDAR

### MONDAYS

**Matarangi Ladies Pilates**  
 at the Fire Station Ph: Christiane 0273122584

**Kuaotunu Library.** Open 24/7  
 when you become a member.  
 Contact Maxine: 07 866 4341 or 027 293 0369.

**Books And Banter** group is held on the first Monday  
 of each month from 7-9 p.m. Contact Pauline.  
 dickinsonpaulinem@gmail.com

**Kuaotunu Craft & Social Club**  
 1-4pm Ph Lia 8662054  
 10.30a.m. @ The Dunes

**Yoga:** 7am Vinyasa @ Kuaotunu  
 Hall. Ph: 021 08100 125

**Contract Bridge.** 7pm, St John's Rooms, 355 Tiki Road,  
 Coromandel 3506 Info: Tadek Gawor m:+64 27 235 6335  
 email: tadekgawor@gmail.com

### TUESDAYS

**Men's Coffee Morning** (1st Tues  
 of every Month). 10am @ Pipers.

**Hatha Yoga** 10 - 11.30 am @  
 Kuaotunu Hall.

### WEDNESDAYS

**Contract Bridge**  
 1pm, Mercury Bay Bowling Club,  
 92 Cook Drive, Whitianga 3510  
 Info: Tadek Gawor m:+64 27 235 6335 email: tadekgawor@  
 gmail.com

**Men on Mats** (Pilates for Blokes) 9am till 10am,  
**Allsorts** 10am till 11am  
 Matarangi Fire Station  
 Ph: Christiane 0273122584

**Kuaotunu Steiner Playgroup.** 9am-12pm Ph:  
 Kindergarten 8660094

**Women's Coffee Morning** (1st  
 Wed of every month). 10.30am @  
 Pipers Café. All welcome!

**YOGA:** 7am Vinyasa @ Kuaotunu Hall. Ph: 021 08100125

**Kuaotunu Garden Group.** Meets monthly on the second  
 Wednesday. Ph: Pauline.dickinsonpaulinem@gmail.com

### Historic Kuaotunu Hall

Available for Hire

The perfect place for your event! Our hall is suitable for  
 all kinds of activities - functions, weddings, fundraisers,  
 AGM's, workshops,  
 meetings etc.

Contact Jude:  
 021 676434  
 kuaotunuhall.co.nz



### Thursday Craft Group

Meets at The Dunes 12.30 fortnightly all welcome.  
 Contact Lesley 0212800780

### Kuaotunu Dune Care Group

We regularly meet every third Wednesday of the month  
 and other times for planting or specific projects. For  
 information on where to meet contact Jenny ph 021566035

**Hatha Yoga** 9 - 10.30 am @  
 Kuaotunu Hall.

### FRIDAYS

**Hatha Yoga 3rd Age Chair Yoga.** 9-10.30am

### SATURDAYS

**Matarangi Hash House Harriers** 'run' the last Saturday  
 (4pm) of each month. Location TBA each month.

### SUNDAYS

**Matarangi Sunday Markets** start Labour Weekend.

BB: An adventure, activity, and values based ministry for  
 boys aged 5-15 years old. For info contact: Robyn 020 409  
 39674 robyn.balfour2@hotmail.com please contact Robyn  
 on 020 409 39674.

## Dunes Golf & Community Club

FEBRUARY 2023



Mens 18 hole: Wednesday 10 am

Ladies 18 hole: Thursday 10 am

Mens 9 hole: Monday 8.30am Thursday 8.30am

Ladies 9 hole: Tuesday 10 am and Thursday 10 am

**Matarangi Bowling Group** - meet up Fridays and  
 Sundays from 3pm.

**Matarangi Mah-Jong Group** is recommencing at the  
 Dunes on February 8th, from 12:30 All Welcome.  
 Contact Sheila for information.

### Coming Events:

4th-6th – Waitangi Day Weekend, Fri- Sun Pizzas from  
 3pm, Sunday Live Music with Dave Kennedy

14th Tuesday Valentines Day – 2 course set meal with  
 drink included. Oyster Special

18th Saturday- Battle of the Beaches – Matarangi vs  
 Whangapoa vs Mercury Bay Golf Tournament

4th March – Prabs Farewell Party – Traditional Indian  
 buffet.

## STARGAZERS

### Astronomy Tours

392 SH25, RD2  
 KUAOTUNU  
[www.stargazersbb.com](http://www.stargazersbb.com)  
 PH: 07 866-5343

### FEBRUARY 2023 LOCAL TIDES

	High	Low	High	Low	High
3		6:14	12:24	18:26	
4		0:41	7:02	13:13	19:16
5		1:27	7:46	13:58	20:01
6		2:10	8:27	14:40	20:44
7		2:50	9:05	15:20	21:24
8		3:28	9:43	15:59	22:02
9		4:06	10:20	16:36	22:40
10		4:44	10:58	17:14	23:19
11		5:23	11:36	17:53	
12	0:00	6:04	12:17	18:34	
13	0:44	6:50	13:02	19:19	
14	1:34	7:41	13:51	20:10	
15	2:30	8:39	14:46	21:08	
16	3:32	9:41	15:47	22:10	
17	4:36	10:45	16:51	23:14	
18	5:38	11:49	17:55		
19		0:15	6:37	12:49	18:57
20		1:13	7:32	13:46	19:54
21		2:07	8:25	14:39	20:48
22		2:59	9:16	15:31	21:40
23		3:49	10:05	16:21	22:30
24		4:39	10:54	17:09	23:19
25		5:28	11:42	17:57	
26	0:08	6:18	12:31	18:45	
27	0:58	7:10	13:21	19:34	
28	1:51	8:04	14:12	20:26	

LINZ

## STARGAZERS

Phone: 07 866 5343

## WE NEED YOU!

### Mercury Bay Community Choir

Rehearsals every Monday at  
 MB Area School starting from  
 Feb 13th at 6.15pm

Contact: Kate Nielsen 027 270 9058



Proud sponsor of local community  
 groups, clubs and events

[allaboutwhitianga.co.nz](http://allaboutwhitianga.co.nz)

Phone Cathy: 021 396 481



HOT HOT SUMMER

# BLIND SALE

**Factory Direct  
Prices, Quality  
NZ Made Blinds**

**FREE DELIVERY ON  
EVERY ORDER**

Venetians | Rollers,  
Verticals | Wooden  
or Wood-look Blinds

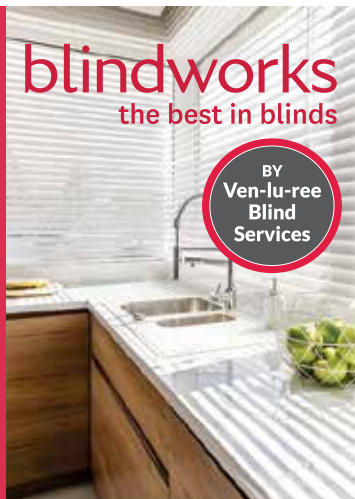
**BUY ONLINE**

*It's as easy as*

# 1-2-3

**blindworks**  
the best in blinds

BY  
Ven-lu-ree  
Blind  
Services



[www.blindworks.co.nz](http://www.blindworks.co.nz)

**SUZUKI**  
**DF2.5 HP**



**INSTORE  
NOW**  
~~\$1,399~~

**\$1,099**

**Compact & Lightweight  
Excellent Manoeuvrability**

**PACIFIC COAST MARINE**

5 MOEWAI ROAD, WHITIANGA

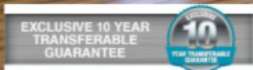
admin@pcmarine.co.nz

[www.pcmarine.co.nz](http://www.pcmarine.co.nz)

07 8660551



**MASTERCRAFT**  
KITCHENS



*We understand that your kitchen is the  
heart of your home.*

243 South Highway Whitianga  
phone: 07 866 4111 mobile: 027 2266 289

email: [carol@mastercraft.co.nz](mailto:carol@mastercraft.co.nz)

[www.kitchensoncoromandel.co.nz](http://www.kitchensoncoromandel.co.nz)

**LOCAL ASSISTANCE  
WITH SUBDIVISIONS,  
SITE SURVEYS  
AND BOUNDARY  
PEGGING.**

Call Brent Trail  
or Mark Blayney

**07 866 0088**

**26 Lee Street,  
Whitianga**

  
**Surveying  
Services**

 **0800 268 632**

 [www.surveyingservices.co.nz](http://www.surveyingservices.co.nz)



# /Richardsons

Real Estate Ltd MREINZ / Matarangi  
Licensed REAA2008



**Spacious & Versatile Three-Back**

**110 Corokia Place, Matarangi**

**Deadline Sale - All Offers to be received by 1pm 20 Feb 23**

For details call:

**Keith Goodall 021 276 6474 / 07 866 0322**

Email: keithg@richardsons.co.nz

**www.richardsons.co.nz**

(Unless sold prior)

Ref: RM4206



**Make The Discovery**

**103 The Tee, Matarangi**

**Offers Over \$875,000**

For details call:

**Simone Parr 027 6572980 / 07 866 0322**

Email: simonep@richardsons.co.nz

**www.richardsons.co.nz**

Ref: RM4205



# BAYLEYS

**Kuaotunu bush, sun and views**



**135 Kawhina Lane**

**ID: 2200984**

**For Sale Price by Negotiation**

Perfectly positioned, high above Kuaotunu Village and Beach, this immaculately presented three-bedroom, three-bathroom home is family friendly and makes for elegant rural living, all whilst taking in views over the north of the Coromandel Peninsula and the islands beyond. Set on 15.9 hectares (MOL) on top of a hill in a private bush setting, you will be impressed with the off grid living this property offers. With an internal access double garage, and plenty of outdoor parking there is room for a motor home, boat trailer and guest vehicles. Call today to arrange a viewing.

**Kylie Pullen**

**M: 021 163 6514**

**B: 07 866 0098**

**kylie.pullen@bayleys.co.nz**

**Belinda Sammons**

**M: 027 272 7728**

**B: 07 866 0098**

**belinda.sammons@bayleys.co.nz**

MH REALTY LTD, BAYLEYS, LICENSED UNDER THE REAA 2008

**BUY  
OF THE  
MONTH**



**My Bach My Castle**

**\$1,795,000**

**100 CORDYLIN CRESCENT | MATARANGI**

When it comes to location this extremely well presented holiday home, one back from the beachfront, stands out from the rest. Situated beside the village green and built to maximise superior views other one back sites would be envious of! Upstairs living, inside and out, is the key to this so called "bach". It is where endless summers will be spent sipping margaritas with friends and family. This holiday home has so much to offer. Come see for yourself!



**Mark Hall** Licensed Agent (REA 2008)

**M: 021 607 135 E: mark@beachrealty.co.nz**

**Shirvani Hall** Licensed Salesperson (REA 2008)

**M: 021 028 464 58 E: shirvani@beachrealty.co.nz**

**VIEW ONLINE** [www.beachrealty.co.nz](http://www.beachrealty.co.nz) / MT882



# BEACH REALTY

MATARANGI BEACH REALTY LIMITED LICENSED REAL ESTATE AGENT REAA 2008

**PROUDLY LOCAL**

**RayWhite**



**131 Waimaire Avenue 3 2 2 1**

**\$1,299,000**



**109 Miro Place 4 2 1**

**Enquiry over \$1,150,000**



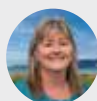
**153 Ngaio Drive 767m²**

**\$541,000**



**105 Karo Drive 3 1**

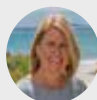
**\$880,000**



**Louise Bradley**

**027 348 1700**

**louise.bradley@raywhite.com**



**Pip Perry**

**020 4063 7380**

**pip.perry@raywhite.com**

Call your Matarangi based Salespeople for a current market appraisal.

**rwmatarangi.co.nz**

White Sands Realty Ltd  
Licensed (REAA 2008)